

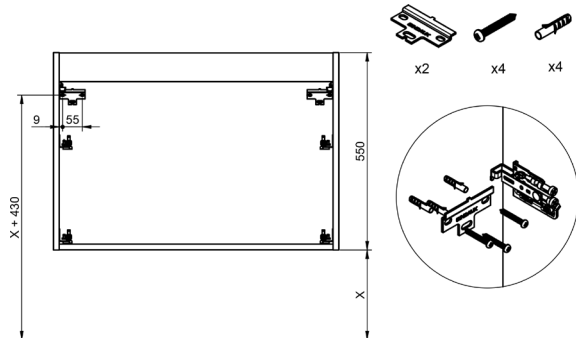


# VISOBATH

ADJUSTMENTS AND FURNITURE CARE

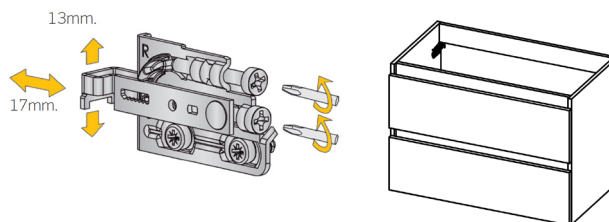
# INSTALLATION AND ADJUSTMENT OF NOMAD VANITY

## 1. Hang the unit on the wall



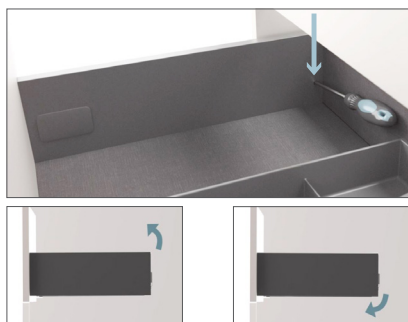
## 2. Level the unit, adjusting the hanger if necessary

\*Level the unit once fitted to the wall

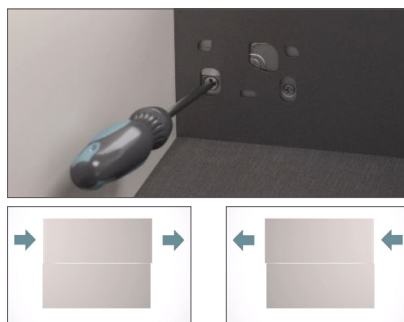


## 3. Adjustment of the IRON drawer (full extraction)

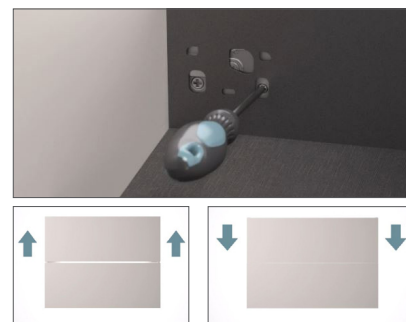
### 3.1 Adjust inclination



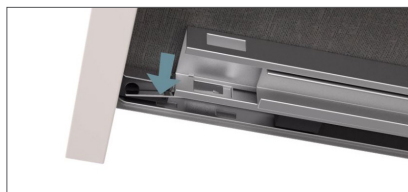
### 3.2 Lateral adjustment



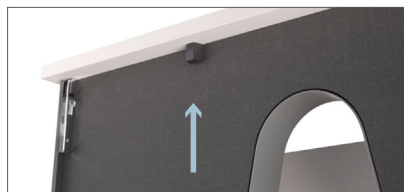
### 3.3 Height adjustment



### 3.4 Remove the drawer: press the lower clip

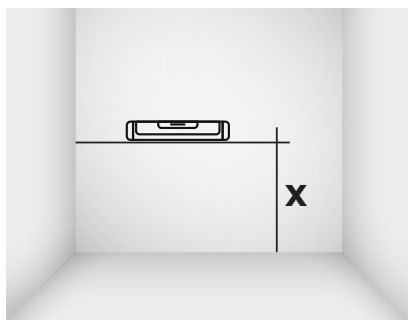


### 3.5 Remove the drawer front: remove the screws and turn the screw behind the cover

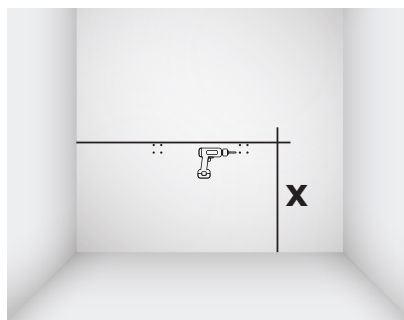


## 4. Installation of countertop and shelf with brackets

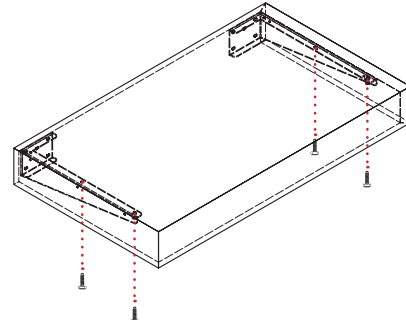
### 4.1 Ensure that the walls are level using a spirit level and calculate the height.



### 4.2 Mark the position of the holes. Drill holes, insert plugs and screw in the bracket.



### 4.3 Position the worktop on the brackets. Level again and screw into place.



X = The countertop is approximately 85-90 cm high.

## BATHROOM FURNITURE CARE AND RECOMMENDATIONS

---

To preserve the best quality of your Visobath product, please ensure you follow these cleaning recommendations:

- . Use only a soft damp cloth
- . Do not use any solvents or abrasive cleaning agents
- . Wipe off water spillages with a clean, dry cloth
- . Opt for regular cleaning instead of deep cleaning